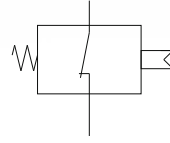
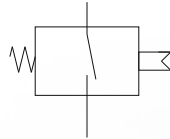


CONFIGURATION
NORMALLY CLOSED



CONFIGURATION
NORMALLY OPEN



Overpressure limit	Brass - Diaphragm Steel - Diaphragm	15 bar 15 bar	Operating temperature	* See the guide to selection of diaphragms / seals		Standard protection level	.F0 Faston Connection - IP00 * See the attachment caps and connectors	
Working pressure	Brass - Diaphragm Steel - Diaphragm	10 bar 10 bar	Max Hysteresis	Diaphragm conf.	10% of full scale value			

Select specifications for product coding

1.	Setting Range									01	02			
										Diaphragm -100 : -500	Diaphragm -500 : -900			
2.	Electrical Load									4	5			
										12V / 50mA Gold plated	48V / 0,5 A			
3.	Electrical Condition									A	C			
										Normally Open	Normally Closed			
4.	Housing Material									B	Z	I	W	
										Brass	Galvanized Steel	Stainless Steel 303	Stainless Steel 316	
5.	Seals									H	E	S	V	I
										HNBR	EPDM	MVQ (silicone)	FKM	Stainless Steel Diaphragm
6.	Threads (X1)	00	01	10	11	20	21	23	40	41				
		1/8"BSPT L1 10 mm	1/4"BSPT L1 12 mm	1/8"BSPP L1 10 mm	1/4"BSPP L1 12 mm	M10x1 L1 10 mm	M10x1K L1 10 mm	M12x1.5 L1 12 mm	1/8"- 27NPT L1 10 mm	1/4" - 18NPT L1 12 mm				
7.	Customizations													
	* See the attachment caps and connectors									.F0	.01	.02	.XX	
										Faston connection IP00	Protection Cap KT011 - IP54	Protection Cap KT012 - IP65	Customized product	
8.	Adjustments (bar)											S	D	
												Rising Setup	Falling Setup	

VR5

1.	2.	3.	4.	5.	6.	7.	8.
----	----	----	----	----	----	----	----