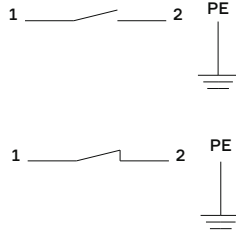
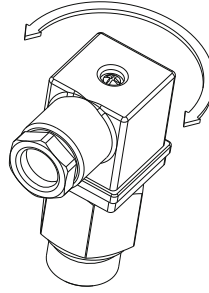


ELECTRICAL CONDITION



ADJUSTABLE CONNECTOR  
DIN43650/A - 360°



<b>Max Pressure</b>	250 bar	<b>Intervention Tolerance</b>	± 3,5	<b>Tightening Torque</b>	25 Nm
<b>Electrical Load Type</b>	48V / 4A 24V / 6A 250Vac / 1A	<b>Thermal Hysteresis</b>	< 14 °C	<b>Housing Material</b>	Brass Hex 27 mm
<b>Fluid Temperature</b>	-40 ÷ +150 °C			<b>Standard Protection Level</b>	.E0 DIN EN Connector 175301-803-A (DIN43650/A) - IP65 * See the attachment caps and connectors

Select specifications for product coding

↓	<b>1. Threads</b>							<b>09</b>	<b>12</b>	<b>25</b>	
								1/2" BSPP L1 13,5 mm	3/8" BSPP L1 13,5 mm	M22x 1,5 L1 13,5 mm	
	<b>2. Switching Temperature</b>	<b>030</b>	<b>040</b>	<b>050</b>	<b>060</b>	<b>070</b>	<b>080</b>	<b>090</b>	<b>100</b>	<b>110</b>	<b>120</b>
		30° C	40° C	50° C	60° C	70° C	80° C	90° C	100° C	110° C	120° C
	<b>3. Electrical Condition</b>									<b>A</b>	<b>C</b>
									Normally Open	Normally Closed	
<b>4. Switching</b>									<b>S</b>	<b>D</b>	
									Rising Setup	Falling Setup	
<b>5. Customizations</b>									<b>.E0</b>	<b>.XX</b>	
	* See the attachment caps and connectors								DIN EN Connector 175301-803-A (DIN43650/A) - IP65	Customized product	

TF4

1.	2.	3.	4.	5.
----	----	----	----	----