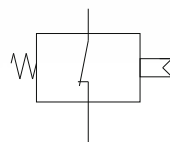
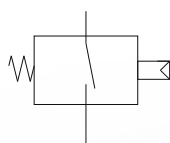


CONFIGURATION
NORMALLY CLOSED



CONFIGURATION
NORMALLY OPEN



Overpressure limit	Brass - Diaphragm Steel - Diaphragm Steel - Piston	80 bar 300 bar 600 bar	Operating temperature	See the guide to selection of diaphragms / seals	Standard protection level	.F0 Faston Connection - IP00 * See the attachment caps and connectors	
Working pressure	Brass - Diaphragm Steel - Diaphragm Steel - Diaphragm	40 bar 180 bar 450 bar	Max Hysteresis	Piston version Diaphragm version	15% of full scale value 10% of full scale value	L2 Dimension	Piston version 42 mm Diaphragm version 39 mm

Select specifications for product coding

1.	Setting Range	01 Diaphragm 0.1-1 Bar	02 Diaphragm 0.2-2 Bar	03 Diaphragm 1.5-10 Bar	04 Diaphragm 9-20 Bar	05 Diaphragm 15-50 Bar	06 Diaphragm 40-80 Bar	07 Diaphragm 50-100 Bar	08 Piston 50-150 Bar	09 Piston 100-250 Bar	10 Piston 40-300 Bar
2.	Electrical Load									4 12V / 50mA Gold plated	5 48V / 0,5 A
3.	Electrical Condition									A Normally Open	C Normally Closed
4.	Housing Material							B Brass	Z Galvanized Steel	I Stainless Steel 303	W Stainless Steel 316
5.	Seals						H HNBR	E EPDM	S MVQ (silicone)	V FKM	I Stainless Steel Diaphragm
6.	Threads (X1)	00 1/8"BSPT L1 10 mm	01 1/4"BSPT L1 12 mm	10 1/8"BSPP L1 10 mm	11 1/4"BSPP L1 12 mm	20 M10x1 L1 10 mm	21 M10x1K L1 10 mm	23 M12x1.5 L1 12 mm	40 1/8"- 27NPT L1 10 mm	41 1/4" - 18NPT L1 12 mm	
7.	Customizations * See the attachment caps and connectors							.F0 Faston Connection - IP00	.01 Protection Cap KT011 - IP54	.02 Protection Cap KT012 - IP65	.XX Customized product
8.	Adjustments (bar)									S Rising Setup	D Falling Setup

PR5

1.	2.	3.	4.	5.	6.	7.	8.
----	----	----	----	----	----	----	----